

RRI Tools

Fostering Responsible Research and Innovation

A long time ago in a galaxy far,
far away....

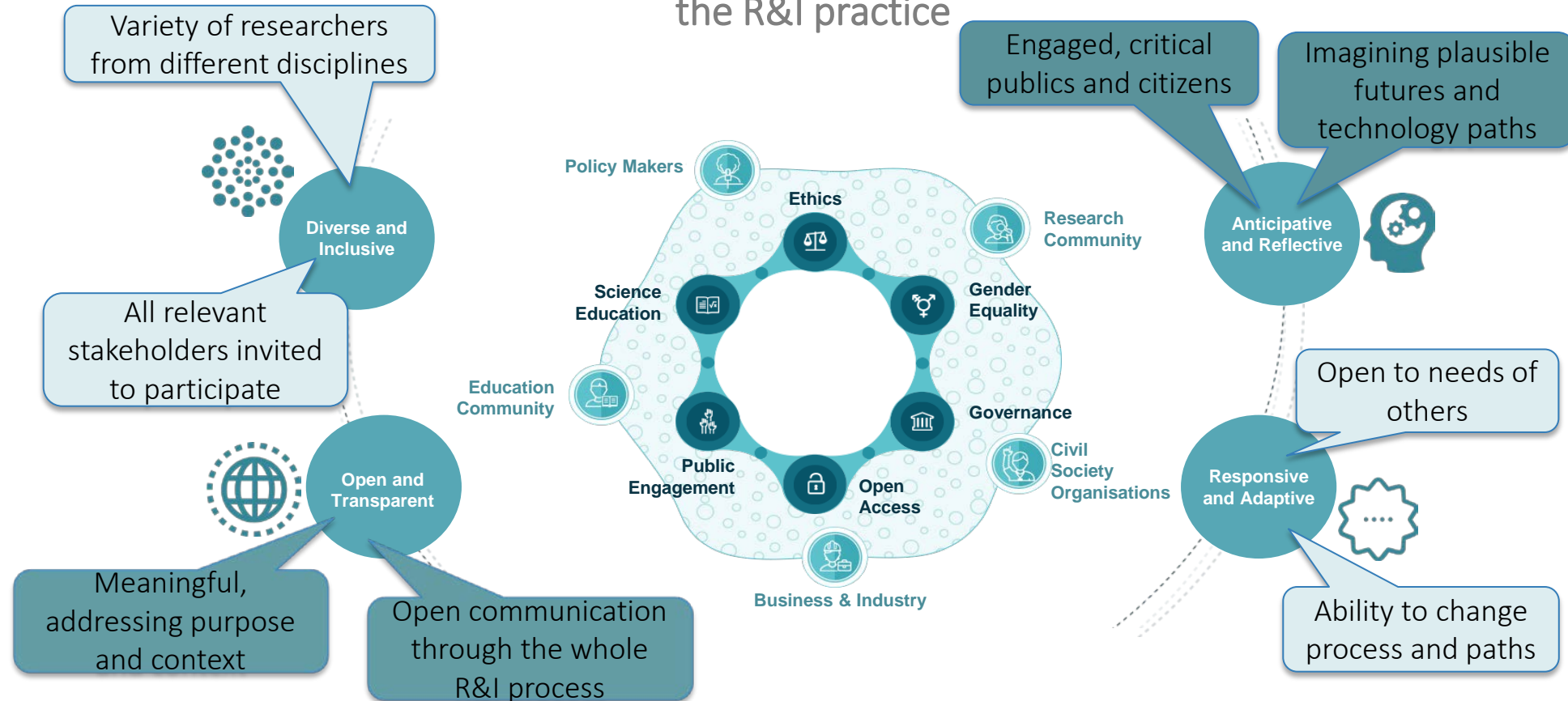


**INNOVATIVE
TOOLS**

**TRANSFORMATIVE
TRAINING**

**WIDE
DISSEMINATION**

Responsible Research and Innovation (RRI) is about including all actors, considering specific key issues and integrating some process dimensions in the R&I practice



Working together towards ethically acceptable, socially desirable and environmentally sustainable products and services that address the grand societal challenges of our time

- 27 consultation workshops
- 30 ERA countries covered
- 400+ participants
- 5 stakeholder groups
- 48% women / 52% men



Large number of existing, useful **(but invisible!)** resources

Civil society organisations

Workshop attendees



Obstacles to RRI

- * We can't do it on our own and we don't have the relationships
- * Information and communication about RRI is not enough
- * Limited resources in small organisations

Actions identified by civil society organisations

- * Further and formalise public involvement
- * Improve science communication
- * RRI in organisational strategies

Need for practical guidelines on how to put RRI in practice

Education

Workshop attendees



Obstacles to RRI

- * We can't do it on our own and we don't have the relationships
- * Time is scarce
- * Systems and attitudes can be difficult to change

Actions identified by Education

- * Change the curriculum to include and reflect RRI
- * Train teachers on RRI
- * Build a community

Opportunity for RRI

- * Generate new networks and partnerships
- * Improve science education
- * More inclusive and diverse engagement

Actions identified by Business & Industry to further RRI

- * Enable collaboration between stakeholders
- * Help finding new markets and models
- * Remove any bureaucratic obstacles to RRI

For further information visit:
www.rri-tools.eu
#RRItools

Policy Makers

Workshop attendees



Obstacle to RRI

- * Policy making is inflexible and doesn't necessarily involve the public
- * Difficult to reach representative publics
- * Too much focus on the short term

Opportunity for RRI

- * Involving the public can make more acceptable and accountable policy, research and innovation
- * New partnerships
- * Enhance competitiveness and creativity

Actions identified by Policy Makers to further RRI

- * Enable collaboration between different stakeholders
- * Review science practice and funding
- * Develop training for research funders

Researchers

Workshop attendees



Obstacles to RRI

- * Scientific culture towards RRI is unpredictable
- * RRI is not seen as a priority

Opportunities for RRI

- * Generate new opportunities for individual researchers
- * Coordinating existing RRI practices across research and innovation initiatives
- * Generate new networks and partnerships



RESEARCH COMMUNITY

How to put RRI into practice

The RRI Toolkit: recommended resources for the Research Community



TOOLS



INSPIRING
PRACTICES



PROJECTS



LIBRARY
ELEMENT



TYPE OF RESOURCE

TOOL

Access to different
instruments to implement
RRI in your Research centre



GAP
Connecting Science
Stakeholders and Policy

Tool



Methodological Toolbox for
Collaborative Research



Tool



How Open Is It? Open Access
Spectrum



Tool



INTEGER - Guidelines for Gender
Structural Change in High
Education and Research
Organizations

SEE ALL

How RRI is your practice?

Try the Self-Reflection Tool and retrieve
specific resources tailored to your needs

SELF-REFLECTION TOOL

... to masters



Stakeholder landings

From newcomers...


[IN SHORT](#)
[WHY](#)
[WHAT](#)
[HOW](#)

What you do when you do RRI?

Outcomes

Process dimensions

To reach these outcomes, practicing a more responsible research and innovation requires that processes are:



Diverse & inclusive: involve early a wide range of actors and publics in R&I practice, deliberation, and decision-making to yield more useful and higher quality knowledge. This strengthens democracy and broadens sources of expertise, disciplines and perspectives.



Anticipative & reflective: envision impacts and reflect on the underlying assumptions, values, and purposes to better understand how R&I shapes the future. This yields to valuable insights and increase our capacity to act on what we know.



Open & transparent: communicate in a balanced, meaningful way methods, results, conclusions, and implications to enable public scrutiny and dialogue. This benefits the visibility and understanding of R&I.



Responsive & adaptive to change: be able to modify modes of thought and behaviour, overarching organizational structures, in response to changing circumstances, knowledge, and perspectives. This aligns action with the needs expressed by stakeholders and publics.

A normative framework for RRI: the six policy agendas

The European Commission has provided more concrete normative orientations in the form of six policy keys that RRI should further:



What is RRI?



How to put Gender Equality into practice



Promoting gender balance
in decision-making



Ensuring gender balance
in R&I teams



Embedding gender equality
in research proposals



Reflecting on and integrating the
gender dimension in R&I content



Training

The RRI Toolkit: recommended resources for Gender Equality



TOOLS



INSPIRING
PRACTICES



PROJECTS



LIBRARY
ELEMENT



TYPE OF RESOURCE

PROJECT

Get to know other projects
related to Gender Equality
addressing RRI values

GenPORT

Project

GENPORT. An internet portal for
sharing knowledge and inspiring
collaborative action on gender
and science

STAGES

Project

STAGES - Structural
Transformation to Achieve
Gender Equality in Science

genderSTE
Science, Technology, Environment

Project

genderSTE - gender in Science,
Technology and Environment

SEE ALL



Policy agenda landings





HOW TOS

Interested in applying RRI concepts and strategies in particular contexts and within specific areas?

Community guidelines

< POLICY MAKERS



HOW TO IMPLEMENT RRI AT NATIONAL LEVEL >



HOW TO INCORPORATE THE RRI PRINCIPLES IN A FUNDING CALL >



HOW TO INCORPORATE RRI IN POLICY/FUNDING INSTITUTIONS >



HOW TO SET UP COLLABORATIVELY A RESEARCH AGENDA >



How to set up collaboratively a research agenda

Setting up a participatory research agenda has multiple advantages: apart from helping to identify stakeholders' unmet needs and what matters to end users, it also helps researchers include new perspectives in research, prepare stakeholders for the research process, structure the process for broader collaboration between stakeholder groups, and enable and empower stakeholders to develop their own voice.

Examples of participatory research agenda setting methodologies

In setting up a participatory research agenda, lessons can be drawn from a few domains, including:

- Agricultural development in developing countries: The [Centre for Coordination of Agricultural Research and Development for Southern Africa \(CCARDESA\)](#) organised meetings with different stakeholders to promote innovative participatory research methods that ensure that agricultural research and development agendas respond to the needs of the different stakeholders (farmers, policy makers, decision makers in universities, researchers, students, and so on).
- Sustainable development: The [Netherlands Research Programme "Knowledge for Climate" \(2008–2014\)](#) made co-creation of research questions a fundamental aspect of the programme (see page 10 in the [final report](#)).



How-To-Applied guidelines



Resources
 Users

I am looking for...

participatory governance
inspiring Practice
Tool

SEARCH

[UPLOAD A RESOURCE](#)

Filter resources by:

Type:

- ☒ Tool
- ☒ Inspiring Practice
- ☐ Project
- ☐ Library Element

Useful for:

- ☐ Policy Makers
- ☐ Research Community
- ☐ Education Community
- ☐ Business & Industry
- ☐ Civil Society Organizations

Address:

- ☐ Ethics
- ☐ Gender Equality
- ☐ Governance
- ☐ Open Access
- ☐ Public Engagement
- ☐ Science Education

[more filters](#)

Showing 1-12 of 17 results

Mind the gap!

Multi-stakeholder dialogue for priority setting in health research

Based on a Workshop held by the King Baudouin Foundation in Brussels on November 27 and 28, 2013

Tool

1

Mind the gap! Multi-stakeholder dialogue for prioritysetting in health research.



Tool

0

Participatory Methods Toolkit. A practitioners manual



Tool

0

People & Participation - How to Put Citizens at the Heart of Decision-Making



Tool

0

Methodological Toolbox for Collaborative Research



Inspiring Practice

1

Fundación IberoCívica



Tool

0

Civic Activism Toolkit



Inspiring Practice

0

Open Data Barometer 3rd Edition



Inspiring Practice

0

Marlisco (Marine Litter in European Seas - Social Awareness and Co-Responsibility)



Achieving gender balance at the top

Tool

0

Achieving gender balance at the top of scientific research - Guidelines and tools for institutional change



Resource search engine







Self-reflection tool





Take your time to reflect.


This self-reflection tool stimulates reflections and gives inspiring ideas for RRI practices.



Ethics



Gender Equality


Public Engagement


Science Education


Open Access


Governance



Ethics

Focuses on (1) research integrity: the prevention of unacceptable research practices; and (2) science and society: the ethical acceptability of scientific and technological developments.

[JUMP TO OTHER QUESTION](#)
[JUMP TO OTHER POLICY AGENDA](#)

How can it be used

questions you can select the most u. You can jump between policy questions any time.

[works](#)

Do you use tailored processes to include a variety of stakeholders with different levels of power, genders, ethnicities, classes, ages, routines or experience?

Lorem ipsum dolor sit amet, consectetur adipiscing elit, sed do eiusmod tempor incididunt ut labore et dolore magna aliqua. Ut enim ad minim veniam, quis nostrud exercitation ullamco laboris nisi ut aliquip ex ea commodo consequat.

How is research integrity addressed in your environment?

Lorem ipsum dolor sit amet, consectetur adipiscing elit, sed do eiusmod tempor incididunt ut labore et dolore magna aliqua. Ut enim ad minim veniam, quis nostrud exercitation ullamco laboris nisi ut aliquip ex ea commodo consequat.

Examples:

- Guidelines laid down in a code of conduct
- A monitoring and evaluation committee
- An open culture facilitating integrity conversations
- An integrity training for new employees
- We do not address research integrity

Do you use tailored processes to include a variety of stakeholders with different levels of power, genders, ethnicities, classes, ages, routines or experience?

Whom do you involve in ethical reflection and decision-making?

People have different values, interests and ideals. How do you deal with that?

Do you anticipate the impact of your work on the following dimensions?

How do you deal with morally problematic situations in research and innovation?

Don't you find your question?

[Write it or see more questions](#)

Which role do ethical committees play in your organization?

How is research integrity addressed in your environment?

How do you prevent potentially harmful impacts on the public or the environment?

Who is responsible for the impacts of research and innovation in your view?

What role do ethics and RRI play in your research?

[ABOUT](#)
[WHEN AND WHERE](#)
[RESOURCES](#)

Training & Comm. resources

EXPLAINING THE RRI CONCEPT

This module builds understanding and confidence in using the term through a presentation and an interactive activity. Recommended starting point for any training on RRI.

★ **Explaining RRI**
Introduction to the module

📄 Project brief

📄 Explaining RRI share

📄 RRI, why and what it is?

WHY IS RRI IMPORTANT?

This module helps trainees understand why RRI is relevant to their own work through a discussion-based activity. It works as a follow-up to Explaining the RRI concept and can act as an introduction to Using the RRI Toolkit.

★ **Why is RRI important**
Introduction to the module

📄 Opportunities, obstacles, solutions

📄 Opportunities, obstacles, solutions – brainstorm activity

📄 RRI stakeholder assessment – results of

USING THE RRI TOOLKIT

This module makes trainees work around the Toolkit and gives them the chance to identify resources of use to them and to add new material.

★ **Using the RRI Toolkit**
Introduction to the module

📄 RRI Toolkit training module

📄 The RRI Toolkit: What for? Why should I use it?

📄 How to use the RRI Toolkit

BRINGING RRI TO LIFE: SHOWCASES

To help to bring RRI to life in a concrete way, the project has developed a series of showcases, which give detailed descriptions of examples of RRI in practice. The showcases are accompanied by activities that help trainees think through the steps and resources involved in making RRI happen.

	The Challenge Driven Innovation Scheme Based in Sweden	▼
	The EPSRC's Framework for Responsible Innovation Based in the UK	▼
	The Fishery Benchmarking project of the IPMA Based in Portugal	▼
	The Hao2 company Based in the UK	▼
	The Knowledge for Climate project Based in the Netherlands	▼
	The Novo Nordisk Blueprint for Change Based in Denmark	▼
	The Social Innovation Factory Based in Belgium	▼
	The Xplore Health project Based in Spain	▼

Training & Comm. resources

[Message Boards Home](#)
[Recent Posts](#)

Categories ^

— 20 Items per Page Page 1 of 1

Category

EVENTS
Inform the Community on RRI related calls
[Subcategories:](#) CALLS FOR CONFERENCE

FEEDBACK
Share your opinion, suggest changes and

FUNDING OPPORTUNITIES
News on funding calls and opportunities

HEIRRI
Everything about the Higher Education Institutions and RRI (HEIRRI) project

IMPLEMENTING RRI
Ask for advice to the community to help you implement RRI

JOB OFFERS
RRI-related positions in Europe and worldwide

MEDIA ROOM

Broadcast RRI to the world

Contact the RRI Tools media officer
 Contact your nearest RRI Tools Hub

Communication resources

Project brief
EN • CA • ES • HU
 Leaflet
EN • CA • CS • ES • FR
HU • SR
 Poster
EN • CS • HU
 Presentation

Full press kit
Full set of materials including the above ones, plus printable versions, a press release, an information sheet, a template message and an image
EN

Logos
RRI Tools
Download

Stay tuned

RRI TOOLS BLOG
PRESS RELEASES

European Foundations Award for Responsible Research and Innovation

Call for proposals for the European Foundations Award for Responsible Research and Innovation

Have you successfully incorporated innovative methods to align your research with the needs of society? Do you contribute responsibly to the development of a smart, inclusive and sustainable society?

The European Foundations Award for Responsible Research and Innovation invites you to share your responsible research project for a chance to receive €20,000.

Who may apply?

- Universities, research centres, individual researchers, research consortia, civil society organisations and any other type of organisation involved in a responsible research practice in Europe.
- Research conducted solely by for-profit organisations is not eligible.

The research in question must have been funded and completed after the 2013.

... to masters



Training & Comm. resources



Self-reflection tool



Resource search engine



How-To-Appl guidelines



Policy agenda landings



Stakeholder landings

/ From newcomers...

Welcome to the RRI Toolkit

Towards an open science and innovation system
that tackles the societal challenges of our world



WHAT IS RRI?

I am looking for **resources**

Type here what you are looking for

SEARCH IN THE TOOLKIT

Find tailored information according to...

...your profile



Policy
Makers



Research
Community



Education
Community



Business &
Industry



Civil Society
Organisations



Ethics



Gender
Equality



Governance



Open
Access



Public
Engagement



Science
Education

...your interests

INNOVATIVE TOOLS

- 11 landing pages
- 450+ resources
- 28 application guides
- Self-Reflection Tool
- Available in 18 languages

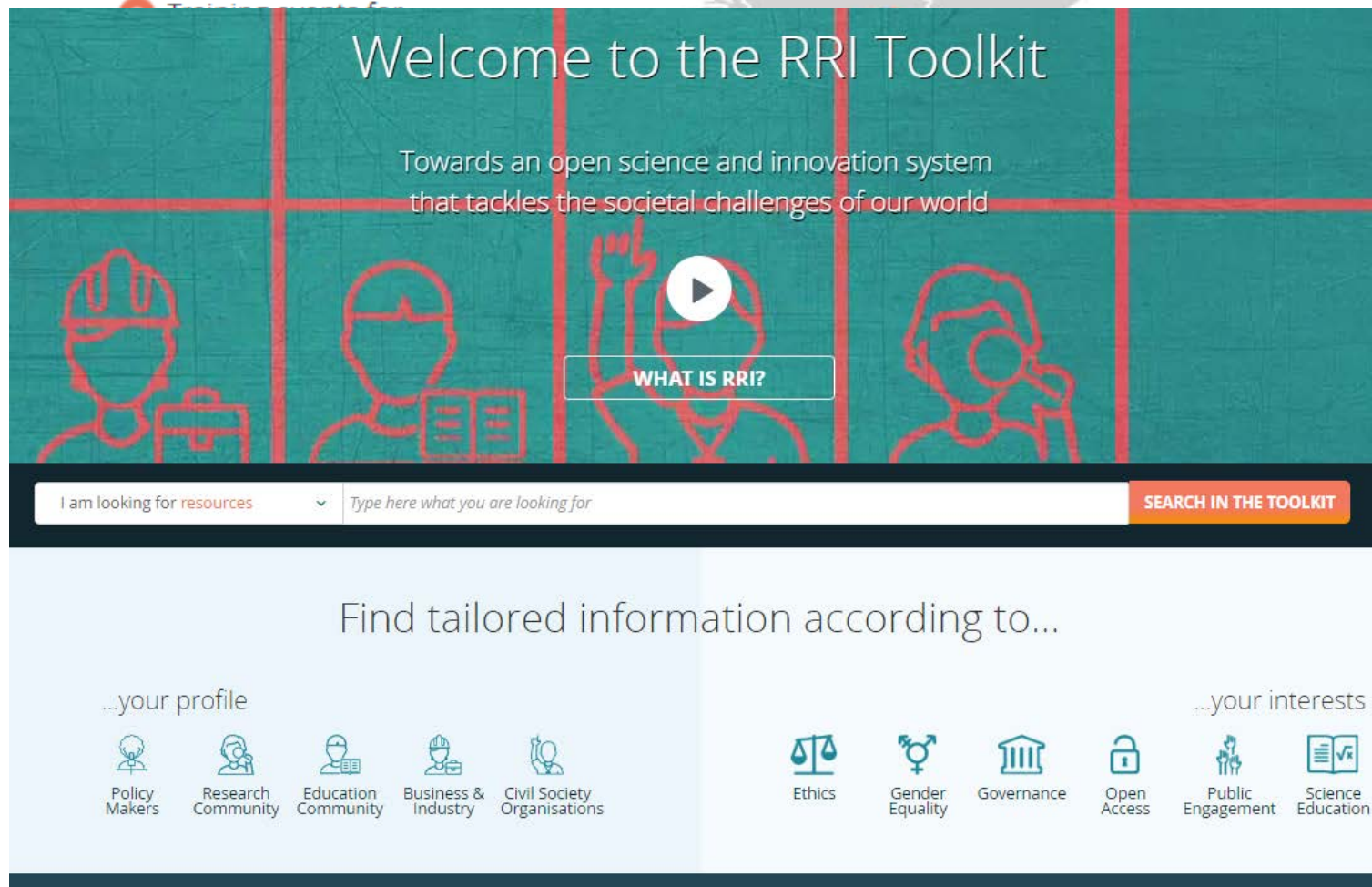
TRANSFORMATIVE TRAINING

- 19 RRI Hubs, 30 ERA countries
- 90+ trainings in 2016
- 400+ institutions engaged
- 4 modules, 8 showcases
- 25+ videos & presentations

WIDE DISSEMINATION

- 800+ Community members
- 170000 Toolkit visits (07/03-...)
- 3400+ followers in SSNN
- 100+ advocacy meetings
- 200+ participations in events

Training workshops from national hubs



The screenshot shows the RRI Toolkit website interface. At the top, there's a header with the text "Welcome to the RRI Toolkit" and a subtitle "Towards an open science and innovation system that tackles the societal challenges of our world". Below this is a video player with a play button and the text "WHAT IS RRI?". A search bar is present with the placeholder text "I am looking for resources" and "Type here what you are looking for", followed by a "SEARCH IN THE TOOLKIT" button. The main content area is titled "Find tailored information according to..." and is divided into two sections: "...your profile" and "...your interests". The "...your profile" section lists five categories: Policy Makers, Research Community, Education Community, Business & Industry, and Civil Society Organisations, each with a corresponding icon. The "...your interests" section lists six categories: Ethics, Gender Equality, Governance, Open Access, Public Engagement, and Science Education, each with a corresponding icon. The background of the website features a map of Europe with location pins.

The EC stRRikes back?

Join the RRI movement!
Together we can RRIule
the European galaxy!

Never!
I want our RRI Toolkit built by
the Community of Practice!

www.rri-tools.eu

@RRITools



www.rri-tools.eu