

# FROM CONCEPT TO REALITY: THE NUCLEUS IMPLEMENTATION ROADMAP

*Caitriona Mordan (Dublin City University, Ireland), Heather Rea (University of Edinburgh, Scotland, UK), Heather Doran (University of Aberdeen, Scotland, UK), Ken Skeldon (Wellcome Genome Campus, UK) and Anne Dijkstra (University of Twente, Netherlands)*



*This project has received funding from the European Union's Horizon 2020 research and innovation programme under grant agreement No. 664932.*



**NUCLEUS**

# OUTLINE

- Introduction
- Purpose of Roadmap
- The Roadmap – Components of Development
- Building Communities: Examples
- Interactive part – Strive for Better
- Questions



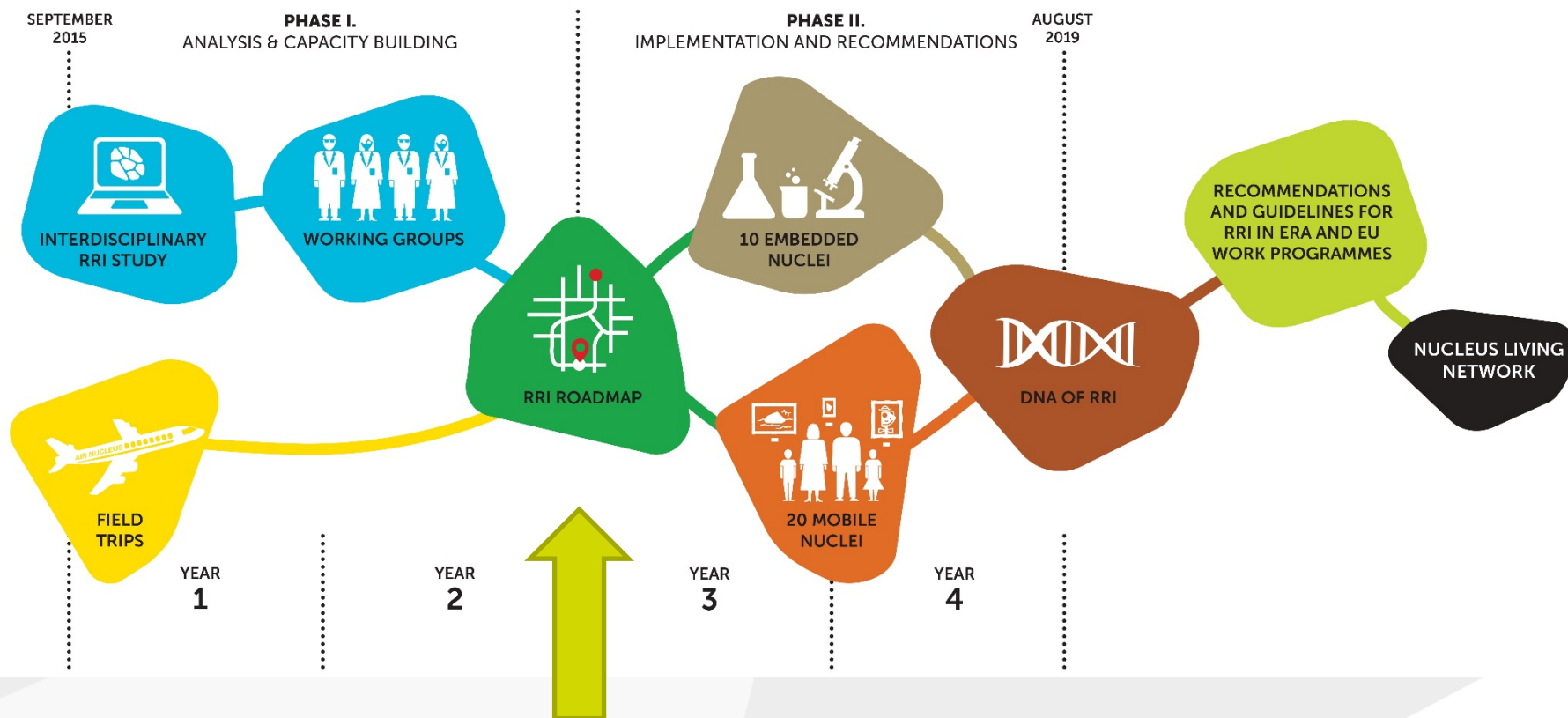
**NUCLEUS**

# PURPOSE OF ROADMAP



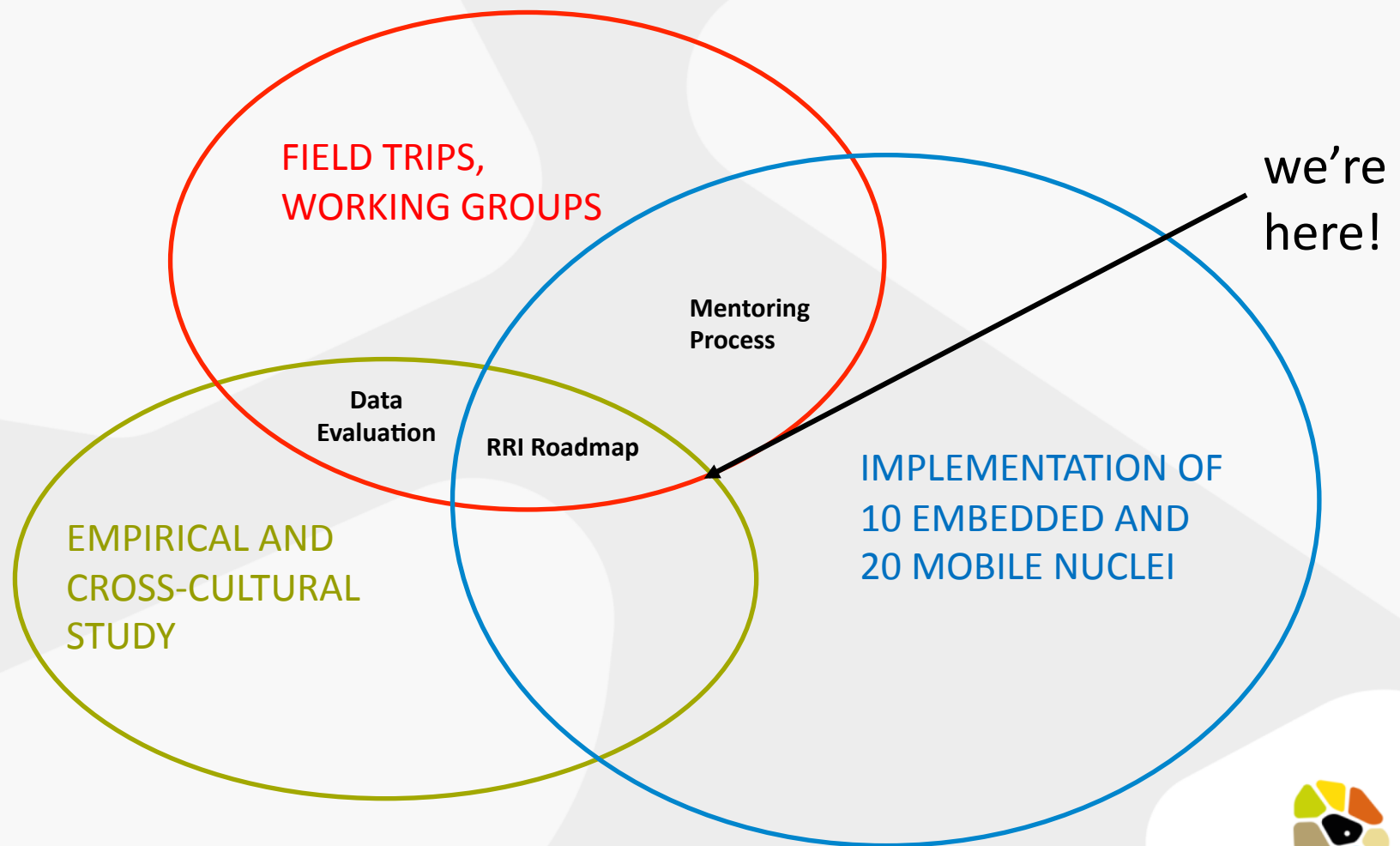
## THE NUCLEUS PROJECT

# TIMELINE



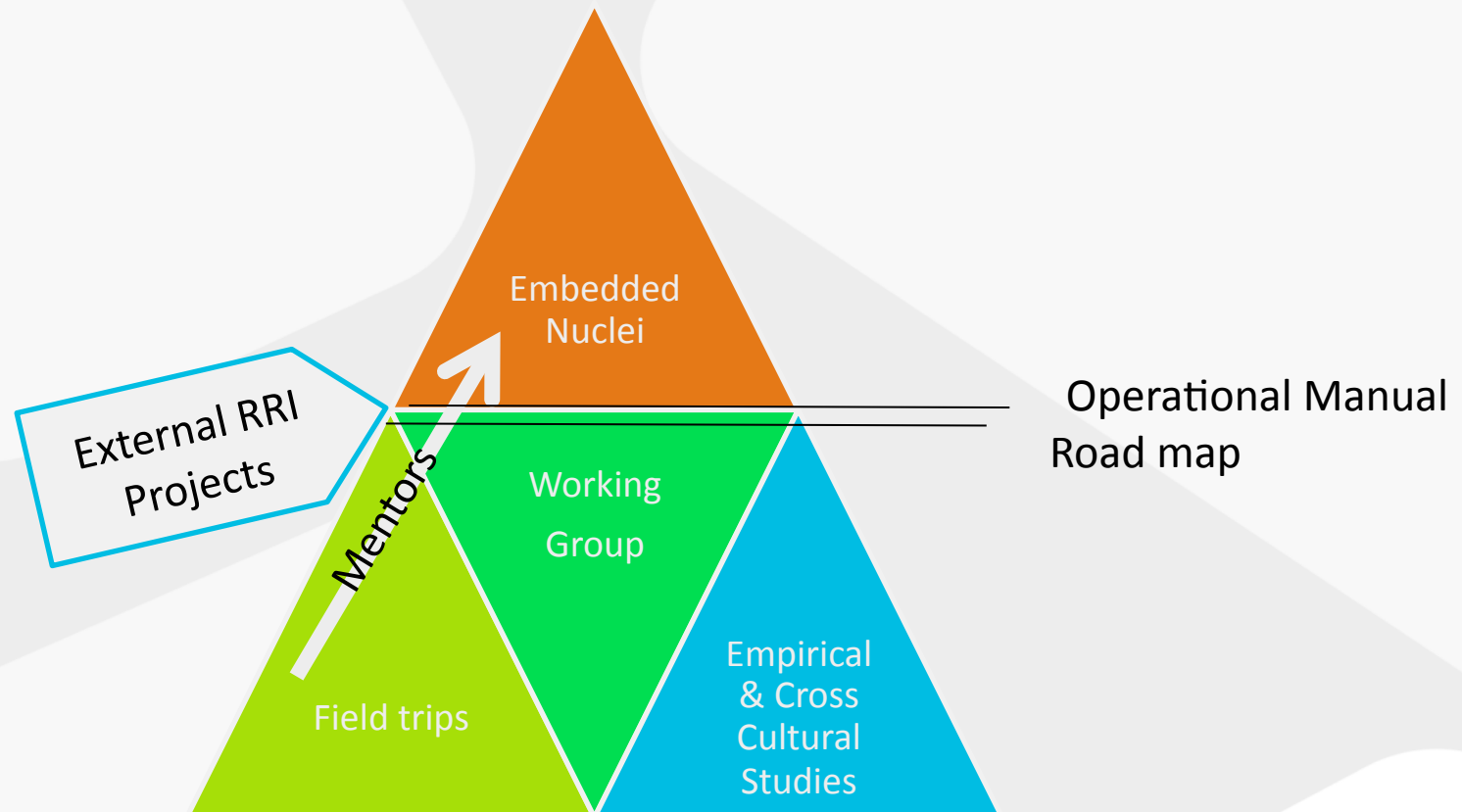
NUCLEUS





**NUCLEUS**

# THE PROCESS



NUCLEUS

# WORKING GROUPS

November

- ***Setting the Scene***
- **Bochum**
- Timeline
- RRI landscape
- Senior leadership
- Mentoring policy

March

- ***Planning for change***
- **Belgrade**
- Assessment results
- Theory of Change
- Shared Objectives
- Staff recruitment

June

- ***Concept to reality***
- **Tbilisi**
- Steps for Embedded Nuclei
- Act locally, think globally
- Develop Toc
- Assessment indicators





**NUCLEUS**

## NUCLEUS Goals and Considerations ☆ Private

**Goal: Build institutionalised bridges between the research community, stakeholders and the general public**

### Definitions

Definition: Institutional bridges ensure long term relationships and future joint working on a variety of projects

### Field Trip Recommendation

#### Method

Person or group who are responsible for relationship management

### Definitions

- This goal is focused on making stakeholders outside academia more responsive to science, and making science more responsive to societal needs.

### Definitions

- Not only focuses on knowledge transfer but focuses on implementing the new ideas into the governance structures of Higher Education Institutions

### Definitions

- Bridges represent the two-way dialogic process of exchanging ideas between the Embedded Nucleus and representatives from the six stakeholder cells. The NUCLEUS project not only encourages the knowledge transfer with the stakeholders but focuses on implementing the new ideas derived

Add a card...

**Goal: Catalyse ongoing debates about the role of science in open societies**

### Study Recommendations Method

RRI Champions

### Study Recommendations Method

Create and facilitate means and platforms for sharing best practice and knowledge

### Field Trip Recommendation

#### Method

Language of RRI – RRI is an unfamiliar term. Current gaps between the understanding of what RRI is in theory and practice

### Study Recommendations

### Field Trip Recommendation

#### Method

Training researchers – to engage with different societal actors, using an RRI approach.

### Goals Study Recommendations

Educate and share knowledge with public to increase scientific literacy

### Field Trip Recommendation

#### Method

RRI training for journalists \*from media Field Trip which isn't included in the D4.10 document

### Study Recommendations Method

Interdisciplinary analysis of social impact of research and innovation

Add a card...

**Goal: Develop, nurture and support new forms of trans-disciplinary research including RRI principals in the scientific community.**

### Study Recommendations Method

RRI Champions

### Field Trip Recommendation Method

Person or group who are responsible for relationship management

### Goals Study Recommendations

Create socially responsible & community orientated research

### Study Recommendations Method

Interdisciplinary analysis of social impact of research and innovation

Add a card...

**Goal: Stimulate co responsibility of all actors involved in the process of research and innovation**

### Study Recommendations

### Field Trip Recommendation

#### Method

Incentives – RRI must be incentivised for researchers and societal actors (funding, rewards). Engagement programme for academics through funding, career progression. - Incentivise RRI, Identify RRI Champions

### Study Recommendations

### Field Trip Recommendation

#### Method

Training researchers – to engage with different societal actors, using an RRI approach.

### Goals Study Recommendations

Widening and equal access to research

### Goals Study Recommendations

Create socially responsible & community orientated research

### Goals Study Recommendations

Educate and share knowledge with public to increase scientific literacy

### Field Trip Recommendation

#### Method

RRI training for journalists \*from media Field Trip which isn't included

Add a card...

**Goal: Question and redefine the prevailing notion of 'participants'**

### Study Recommendations Method

RRI Champions

### Field Trip Recommendation Method

Language of RRI – RRI is an unfamiliar term. Current gaps between the understanding of what RRI is in theory and practice

### Field Trip Recommendation Method

Local knowledge and partnerships – the Roadmap must take into consideration the contextually situated data collected in different geographical locations

### Goals Study Recommendations

Create socially responsible & community orientated research

### Goals Study Recommendations

Educate and share knowledge with public to increase scientific literacy

### Field Trip Recommendation Method

RRI training for journalists \*from media Field Trip which isn't included in the D4.10 document

Add a card...



**NUCLEUS**

# ROADMAP STEPS

## STEPS FOR THE EMBEDDED AND MOBILE NUCLEI

Step 1: Identify the context - mapping the RRI landscape

Step 2: Tailor goals and plan to local context

Step 3: Build on strengths and improve on challenges

- Embedded Nuclei - select two cases
- Mobile Nuclei - select an activity

Step 4: Continuous actions

- Reflect and respond
- Build relationships
- Monitor and evaluate

Step 5: Analyse progress



NUCLEUS

# BUILDING NUCLEUS RRI COMMUNITIES

*Examples of communities of practice  
in other areas*



*This project has received funding from the European Union's Horizon 2020  
research and innovation programme under grant agreement No. 664932.*



**NUCLEUS**



# COMMUNITIES

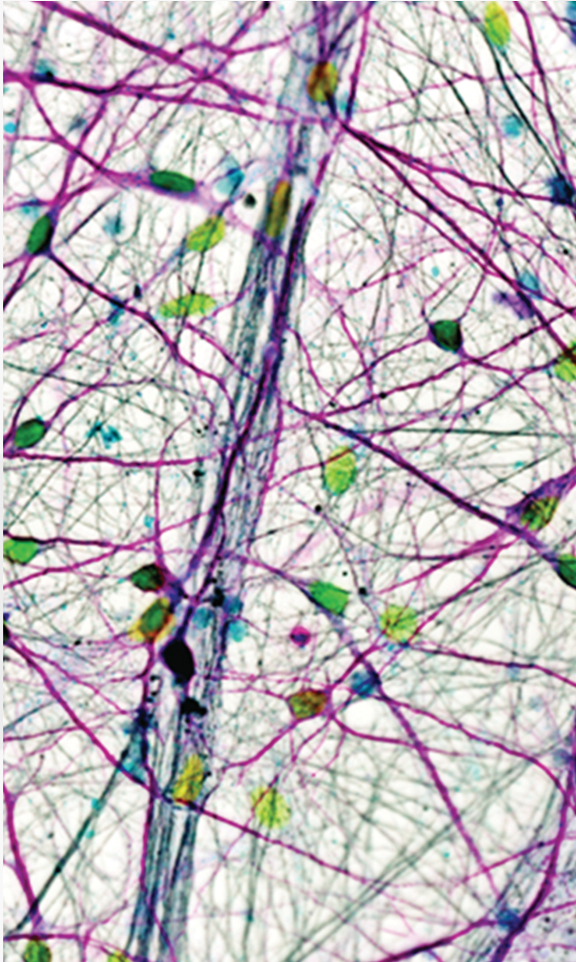


photo by Nina Rzechorzek and Siddharthan Chandran .- Human Circuits in a Dish

- Networks
- Share knowledge
- Peer support
- Sharing best practice
- Championing RRI
- Shared understanding



**NUCLEUS**

# THE DESIGN LAB @ TWENTE

- Physical space
- Resources
- Fellowships
- Open access
- Workshops
- Mix of disciplines, students, staff and externals



NUCLEUS

# BELTANE PUBLIC ENGAGEMENT NETWORK

- Networking events
- Working groups
- Fellowships
- Training
- Sharing best practice
- Website
- Mix of disciplines, universities, externals



NUCLEUS

# MALTA – GENDER MAINSTREAMING

- Research area
- Institutional committee
- Senior champions
- Mentoring programme
- Links into other networks and boards



Dr Brenda Murphy  
Department of Gender Studies  
The University of Malta

<https://www.um.edu.mt/think/mainstream-gender-mainstream-funding/>



**NUCLEUS**

# STRIVE FOR BETTER



*This project has received funding from the European Union's Horizon 2020 research and innovation programme under grant agreement No. 664932.*



**NUCLEUS**

# DEVELOPING YOUR COMMUNITIES

To discuss at your tables:

- Do you know of examples of CoI that work well in your institution?
- Which elements do you think will work in the context of RRI at your institution/ country / situation?
- What will your first steps be?







- Physical space
- Resources
- Fellowships
- Open access
- Workshops & training
- Mix of disciplines, students, staff and externals

- Share knowledge
- Peer support
- Sharing best practice
- Championing
- Shared understanding
- Networks, Networking events
- Working groups
- Sharing best practice
- Website
- Research area
- Institutional committee
- Senior champions
- Links into other networks and boards
- mentoring



**NUCLEUS**

# WRAP UP



*This project has received funding from the European Union's Horizon 2020 research and innovation programme under grant agreement No. 664932.*



**NUCLEUS**





**NUCLEUS**

**THANK YOU!**



**NUCLEUS**