

PLANNING FOR CHANGE

Insights from the Embedded Nuclei

5 October 2017

NUCLEUS Annual Conference 2017

Hannover



This project has received funding from the European Union's Horizon 2020 research and innovation programme under grant agreement No. 664932.



NUCLEUS



ილიას სახელმწიფო უნივერსიტეტი
ILIA STATE UNIVERSITY



UNIVERSITÉ
DE LYON

RUHR
UNIVERSITÄT
BOCHUM

RUB



HOCHSCHULE
RHEIN-WAAL
Rhine-Waal University
of Applied Sciences



Mathematical
Institute
SANU

NOTTINGHAM
TRENT UNIVERSITY

NTU



NRF
National Research
Foundation

SAIAB

South African Institute
for Aquatic Biodiversity



UNIVERSITY OF MALTA
L-Università ta' Malta

UNIVERSITY OF TWENTE.



NUCLEUS

SHARED GOALS

- build institutionalised bridges between the research community, stakeholders and the general public
- catalyse ongoing debates about the role of research in open societies
- develop, nurture and support new forms of transdisciplinary research, including RRI principles, in the scientific community
- stimulate co-responsibility of all actors involved in the process of research and innovation
- question and redefine prevailing notions of “recipients” and “agents”



**THERE IS NOT
ONE PATH.
THERE IS NOT
EVEN THE
RIGHT PATH.
THERE IS ONLY
YOUR PATH.**



PLANNING FOR CHANGE

Insights from the University of Malta

5 October 2017

*NUCLEUS Annual Conference 2017
Hannover*



This project has received funding from the European Union's Horizon 2020 research and innovation programme under grant agreement No. 664932.



NUCLEUS

Advantage we have



- Small nation so close connections
- Easy access to other cells
- Less bureaucracy
- Eager for EU involvement
- Opportunity for large policy leaps



Challenge unique to us

- Embedding RRI is a novel concept
- Small team—time frames
- How does Maltese culture affect RRI
- Focus on economy
- Lack of government policy



Working to our strength



- Good Public Engagement Programme
- Fusing theory and practice to improve PE
- Regular cellular communication
- Support stakeholders to embed RRI
- Focus of societal relevance



NUCLEUS

An area new to us

- Building trust between Edinburgh & UM
- Placing RRI in the spotlight
- Bringing all stakeholders together
- Conference organisation
- Focus on Policy & Economy



PLANNING FOR CHANGE

Insights from Ruhr University Bochum

5 October 2017

NUCLEUS Annual Conference 2017

Hannover



This project has received funding from the European Union's Horizon 2020 research and innovation programme under grant agreement No. 664932.



NUCLEUS

Advantage we have

Huge campus University (43,000 students) with nearly all research areas



Experience in engaging the public with research

- Support structures to transfer research to the public (Corporate communications department, Blue Square)
- University wide Graduate school for early career researchers (RUB Research School)
- Established networks between University and City of Bochum



Challenge unique to us

- Raising the awareness for the topic
- Cultural change by developing early career researchers mind-sets
- Dealing with research diversity
- Considering different expectations of researchers and other stakeholders
- Enabling practical experience early on career paths



Working to our strength



- Combining long lasting experiences in working with:
 - early career researchers and
 - an interested public
- Existing institutionalised frameworks for integrating RRI into existing programmes and activities
- Consistent extension from science communication to engaging the public
- RRI complements our concept to empower responsible early career researchers



PLANNING FOR CHANGE

Insights from NRF-SAASTA-SAIAB

5 October 2017

*NUCLEUS Annual Conference 2017
Hannover*

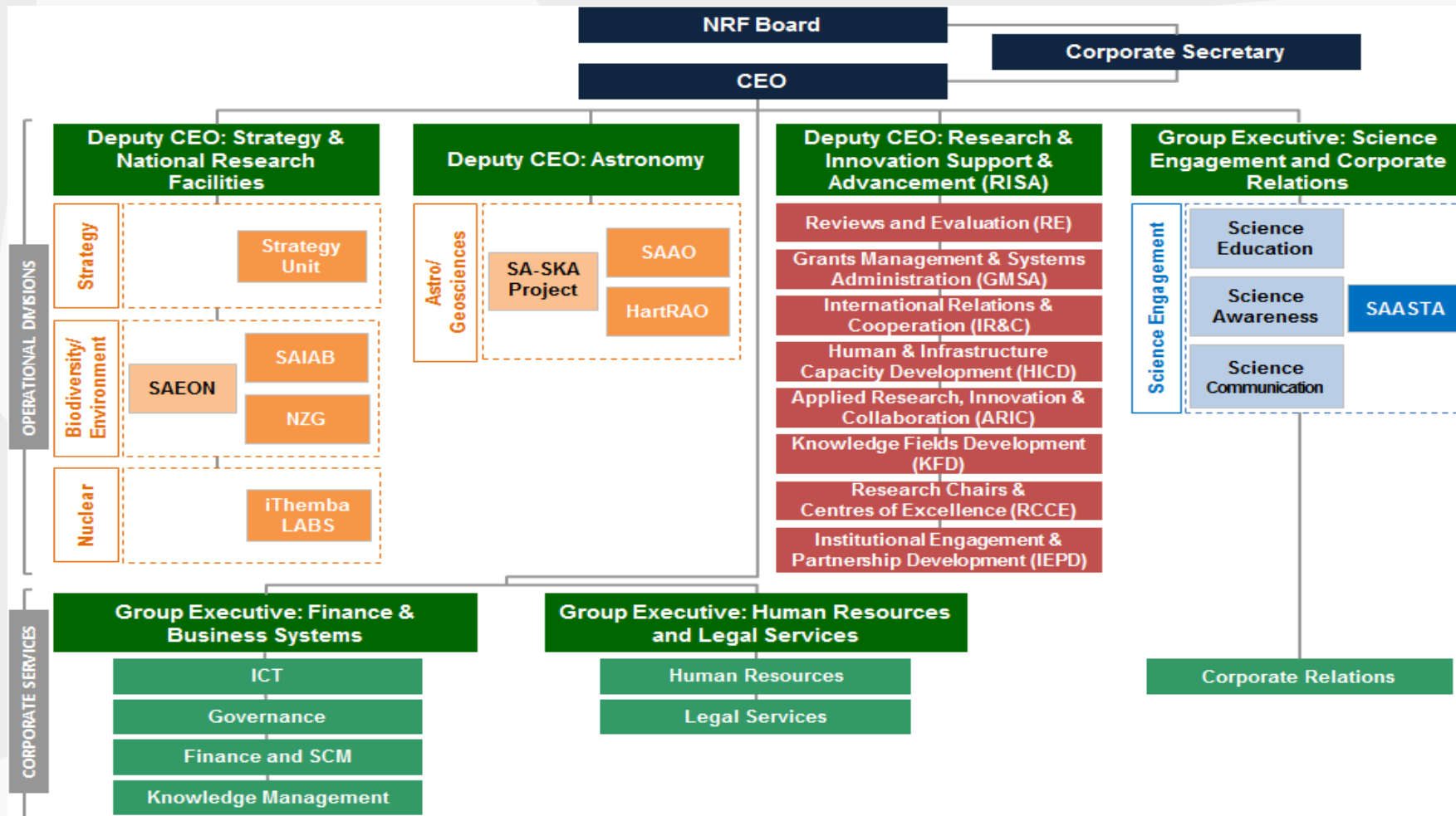


This project has received funding from the European Union's Horizon 2020 research and innovation programme under grant agreement No. 664932.



NUCLEUS

Science Engagement Within the NRF



NUCLEUS

Advantage we have



- Support for NUCLEUS from CEO-NRF through SAASTA to SAIAB
- Rural, small, nibble and cost effective
- Autonomy in operations
- Associated Institute of Rhodes University – Science Communication Chair
- Excellent infrastructure



Challenge unique to us

- Articulating science-to-society links & integrating into science plan
- Limited resources and human capacity
- Research funding 100% linked to calls = reactive
- Growing administrative burden across all divisions



Working to our strength

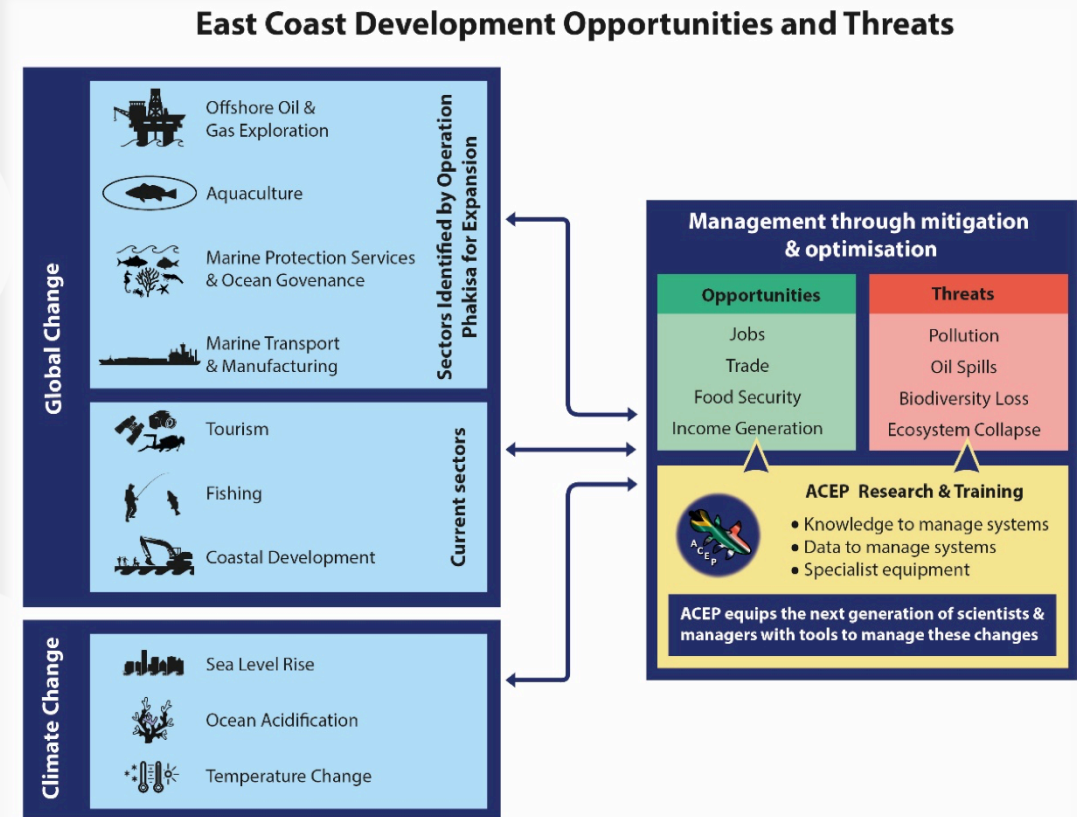


- Geographical location = biodiversity hotspot for coastal and inland development
- Freshwater and marine platforms well-aligned with government priorities
- Multi-institutional, multi-disciplinary network
- Established transformation programme – e.g. ACEP *Phuhlisa*
- Opportunity to integrate research into a cohesive R&D (RRI) strategy



An area new to us

- Work with NRF-SAASTA (NUCLEUS South African partner) & University of Edinburgh (mentor) in planning for change
- Adapt research strategy to meet Science-to-Society mandate (DST)
- Integrate engagement efforts with RU Science Faculty & Community Engagement



PLANNING FOR CHANGE

Insights from University of Twente

5 October 2017

*NUCLEUS Annual Conference 2017
Hannover*



This project has received funding from the European Union's Horizon 2020 research and innovation programme under grant agreement No. 664932.



NUCLEUS

Advantage we have



- High tech, human touch
- Several RRI (related) initiatives at UT
- Nationwide open-access strategy



Challenge unique to us

- Nucleus situated in research department
 - No formal influence
 - Expectations
- Unfamiliar term



NUCLEUS

Working to our strength



Relationships:

- Twente Graduate School
- Design Lab

Policy and (growing) practice:

- Catalysing open access publishing
- Stimulating research ethics, in support of UT policy changes



NUCLEUS

An area new to us

- Assessing and reflecting on societal impacts, in robotics



RoboCup 2017
Nagoya Japan



NUCLEUS

PLANNING FOR CHANGE

*Insights from Ilia State University,
Tbilisi, Georgia*

5 October 2017

*NUCLEUS Annual Conference 2017
Hannover*

Nino Sharikadze



*This project has received funding from the European Union's Horizon 2020
research and innovation programme under grant agreement No. 664932.*



NUCLEUS

Advantages

- Senior Leadership Support (Vice-Rector for Research and Academic Affairs supervising the NUCLEUS Embedding Pilot)
- ILIAUNI Science Communication & Popularization Activities:
 - Science Picnic,
 - Science Cafe
 - Media Interactions (to be implemented)
- Institutional activities directed at making science education career, STEM education fields attractive (San Diego State University and Ilia State University joint program)
- Young Explorers' Clubs in Georgia - connecting school pupils to the higher education level.
- Strong Research Focus of ISU – allocation of annual funds in applied research
- 30 Research Centers and Institutes throughout Georgia.



NUCLEUS

Challenge unique to us

Threats to Successful Implementation of RRI:

- Implementation with the Government Sector;
- Economy Sector;
- Enhancement of profile of ISU research centers and institutes to public and stakeholders
- Citizens engagement



Working to our strength

Science Education:



- Public Engagement (PE) opportunities embedded in science education (science cafe series, science Picnic annual event, young explorers' club, European Researchers Night (GE eligible to apply this call*, science highlight videos online – vodcasting research, annual 'Research Made@ISU' reporting
- To make ISU as emerging national/regional hub for science communication and engagement activities.
- STEM education popularization/science popularization & citizens engagement.



An area new to us

- **Ethics**
- embedded peer review for research proposals (grants)
- official guidelines and standards on ethics component related to R&I
- assessment of research proposals against ethics & harmful impact guidelines (all subject to the feasibility assessment by the leadership)
- **Gender Equality:**
- popularization of outstanding women in R&I;
- making STEM careers attractive to women



Thank you!



PLANNING FOR CHANGE

Université de Lyon

5 October 2017

NUCLEUS Annual Conference 2017

Hannover



This project has received funding from the European Union's Horizon 2020 research and innovation programme under grant agreement No. 664932.

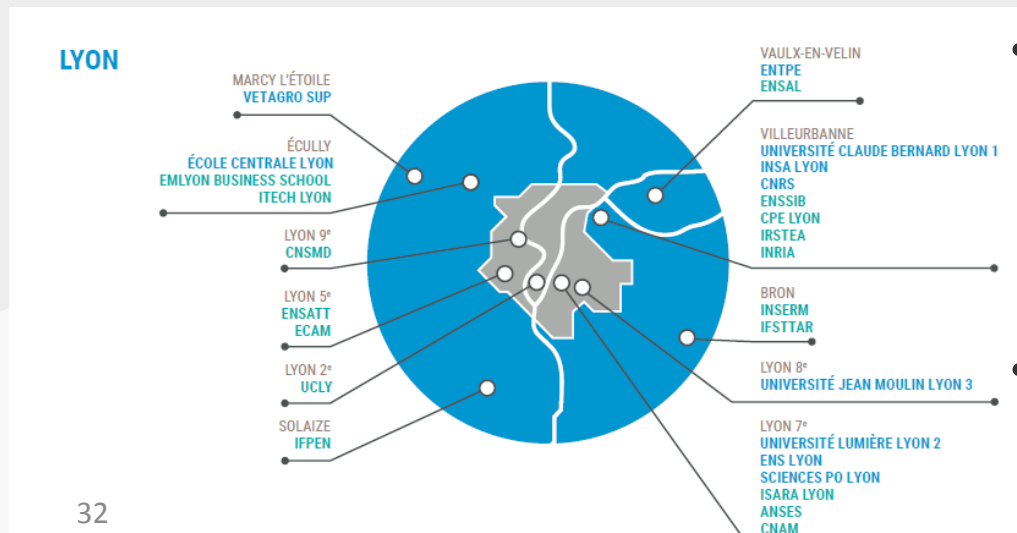


NUCLEUS

Advantage we have



- the main French higher-education and scientific center outside the Paris metropolitan area
- 140,000 students and 168 public laboratories with all the disciplines : health, engineering, culture...
- IDEXLYON a winner: the Université de Lyon has been awarded an IDEX Initiative d'Excellence funding
- Sciences and society activities already implemented and politically support



Challenge unique to us

- The size of the university and the city
- Focused on technological innovation and economy partners and less social interest
- Focused on international ranking which doesn't take into account any RRI activities (Shanghai international ranking)



Working to our strength



- To perform our **science shop** already running for four years > embedding a civil society steering committee
- To invent a **social innovation laboratory** implemented in an academic context (living lab...)
- to implement an Ethical Platform
- To make some criteria to consider RRI actions in students, researchers and laboratories evaluation



An area new to us

- To work with less usual sphere like economic partners or policy makers
- To be more integrated in curricula and research process
- To connect RRI process in ambitious topics : Bio Health and Society
- Science and Engineering for Sustainable Society
- Urbanity and Humanities



PLANNING FOR CHANGE

Insights from

Rhine-Waal University, Germany

5 October 2017

NUCLEUS Annual Conference 2017

Hannover



This project has received funding from the European Union's Horizon 2020 research and innovation programme under grant agreement No. 664932.



NUCLEUS

Advantage we have



- Young, international university in a rural context
- Transdisciplinary approach in all faculties
- Strong commitment to regional development
- Unique venues for science-society dialogues
- Flexible governance, RRI-support from leadership



Challenge unique to us

- International profile makes it difficult to relate with rural region
- “Founding story” was connected to regional development, but current research is not
- Lack of Entrepreneurial Spirit
- Lack of Knowledge-Management both internally and externally



Working to our strength



- Discover and celebrate the “Founding Story” of HSRW
- Connect regional development goals with research + teaching
- Create links to the regional economy which are not just educational
- Develop the ZFIT (Center for Research, Innovation and Transfer) into a strategic hub for RRI



NUCLEUS

An area new to us

- “RRI Steering Committee” with stakeholders from all “Cells”
- Committee will foster culture change by turning stakeholders into responsive agents.
- Focus areas related to regional development goals:
 - Logistic, Infrastructure, Technology and Knowledge-Transfer
 - Demographic Change, Education and Social Prevention
 - Regional Marketing, Communication und Cooperation



Thank you!



PLANNING FOR CHANGE

Insights from MISANU

5 October 2017

NUCLEUS Annual Conference

2017 Hannover



This project has received funding from the European Union's Horizon 2020 research and innovation programme under grant agreement No. 664932.



NUCLEUS

Advantage we have



*Members of SANU and founders of the
Mathematical Institute*
(Source: The Archive of SANU)

- Support from MISANU Governing Bodies
- Strong Link to Serbian Academy (SANU)
- Strong Link to Faculties employing Mathematicians
- Successful Interactions with Government Ministries
- Experience in Public Engagement



Challenge unique to us

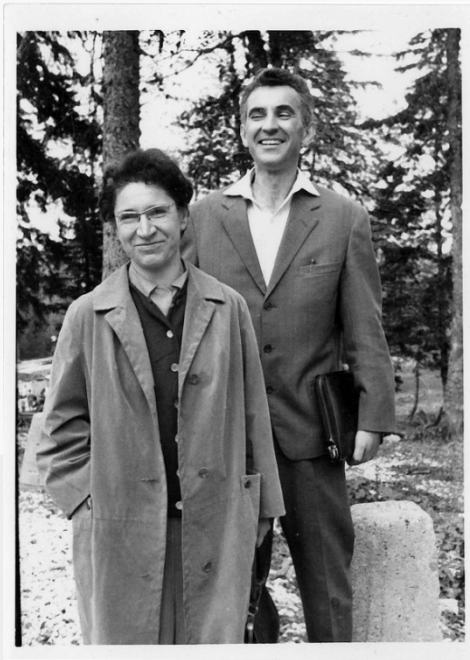
- Working with Civil Society



(Source: [ccsrwebmaster1].(2015, January 22) Civil Society Organisations in Research [VideoFile]
Retrieved from https://www.youtube.com/watch?time_continue=3&v=3AXBazRnTdA.)



Working to our strength



*Dr Mileva Prvanović and Dr Bogoljub Stanković,
the first two Assistants of MISANU, who
later became Academicians*
(Source: Personal Archive of Z. Stojaković)

- Cell: Policy Making; Feature: Gender Equality
- Development of MISANU Gender Committee
- Network of Support and Guidance*
- Gender Analysis in Mathematics in Serbia
- Inspire the Gendered Research Strategy in Serbia

*) Coordination Body for Gender Equality of the Government of the Republic of Serbia, Intersection, Gender Knowledge Hub, NUCLEUS partners...



An area new to us

- Cell: Civil Society; Feature: Science for Society
- Mapping a Stakeholder Network*
- Dialogue with Societal Actors
- Identification of the Societal Needs
- Support Research that meets Societal Needs

*) The Office for Cooperation with Civil Society, Technical Assistance for Civil Society Organisations (Office in Serbia), Intersection, Research Project Leaders, Ministry of Education, Science and Technological Development.



Participation of MISANU in the Civil Society's Festival "Night of the Museum 2017" in Belgrade
(Source: The Archive of MISANU)



PLANNING FOR CHANGE

*Insights from
Nottingham Trent University*

5 October 2017

NUCLEUS Annual Conference 2017 Hannover

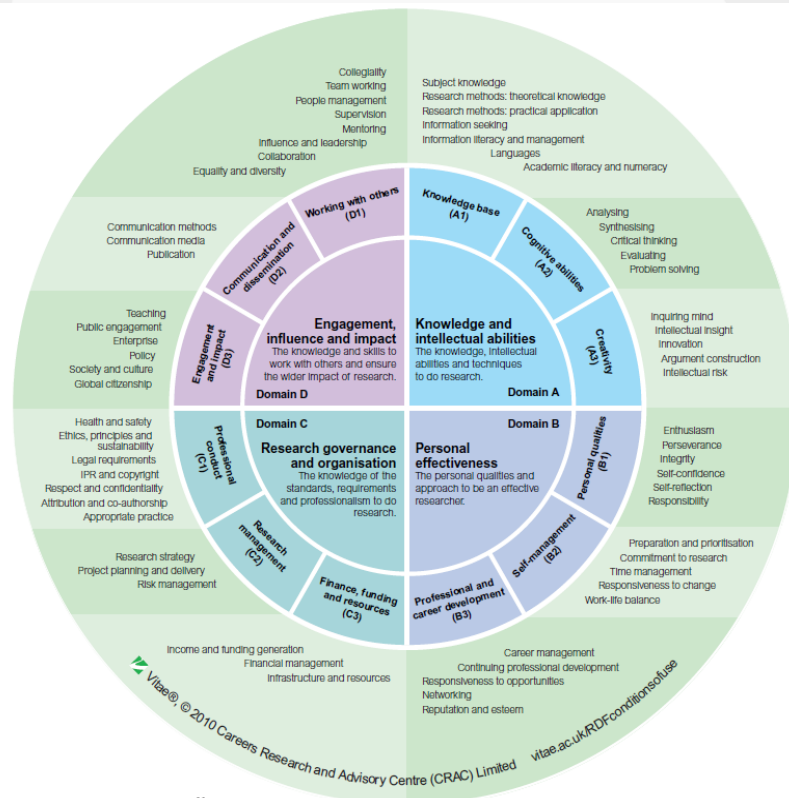


This project has received funding from the European Union's Horizon 2020 research and innovation programme under grant agreement No. 664932.



NUCLEUS

Advantage we have - Activity



- Activities underway under all headings
- Head of Doctoral School in project
- Strong relationships with stakeholders
- RRI principles are valued @NTU
- Research Integrity Agenda and VITAE



Challenge for us- SILOs

Difficulties in:

- Selling the concept of RRI
- Communication between silos...
- ...and between policies and people
- Disjointed stakeholder engagement
- Lack of reward and recognition



Working to our strength- PhD Training

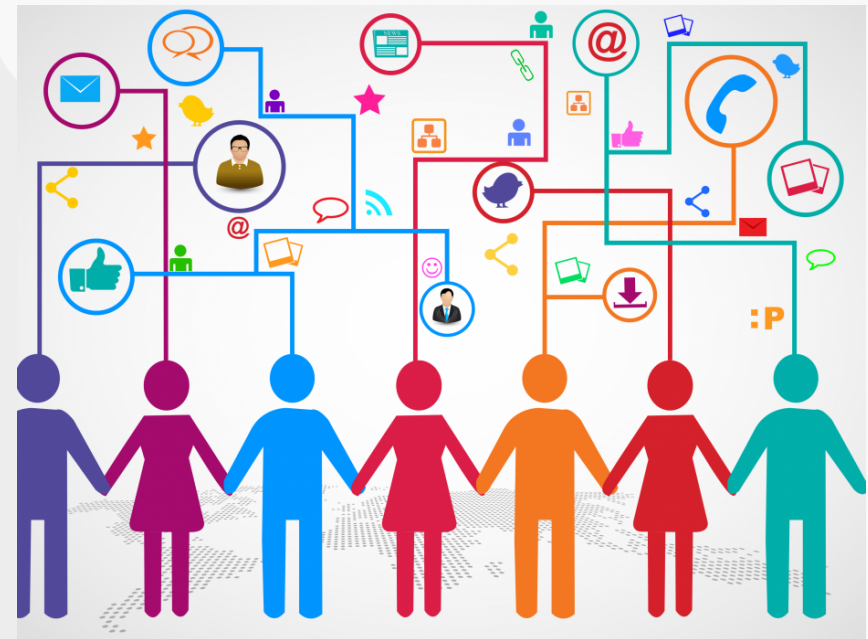


- Committed to VITAE framework
- Multi-disciplinary group projects
- Ethics – beyond the forms
- Public Engagement



An area new to us- Communication

- Build *Community of Practice* across NTU
- Develop networks of internal stakeholders
- Achieve buy-in of gatekeepers (leverage)
- ...and increase impact on students



QUESTIONS



This project has received funding from the European Union's Horizon 2020 research and innovation programme under grant agreement No. 664932.



NUCLEUS